

---

Friday 9<sup>th</sup> October 2009

## HMRI Building designed to advance research and health

The Hunter Medical Research Institute's (HMRI) world class research facility is taking shape, with plans available for public exhibition from the NSW Department of Planning from Monday October 12.

"With the support of our community, HMRI has come a long way since it was established 11 years ago. We have grown from 100 researchers to more than 700, and are now the third largest medical research institute in New South Wales. The strategy has been to grow the research capacity in the Hunter, and establish strong co-ordinated research programs that deliver research excellence," said HMRI Chairperson Bob Kennedy.

"Over the next 10 years our aim is to have researchers here in the Hunter that are second to none in the world. In order to do that, we need to provide the right environment to allow our researchers to prosper. The HMRI Building is part of that strategy."

The HMRI Building will house 400 medical researchers from the University of Newcastle and Hunter New England Health, in close proximity to John Hunter Hospital.

"For the first time our major teaching hospital will have a research facility associated with it. This will enhance the integration of research with clinical services. The Building will attract the best doctors, health specialists and researchers to the Hunter, ensuring that our community receives excellent health care," said HMRI Director Professor Maree Gleeson.

"The philosophy behind the Building design ensures interaction between researchers to encourage the exchange of ideas. Public entry to the Building via a 'skywalk' bridge link provides connectivity with the hospital and collaborations with our clinical researchers. Sharing their ideas will lead to innovative research and better health outcomes."

The facility was designed by specialist laboratory architects S2F in conjunction with Denton Corker Marshall.

It is estimated that construction of the \$90 million Building, due to begin in 2010, will inject a further \$178 million into the Hunter's economy and create over 680 jobs.

The Building has received funding from the Australian Government, NSW Government and the University of Newcastle. HMRI has commenced a capital campaign to secure the final funding for the Building, which was part of HMRI's original commitment to governments when the first grant was awarded.

HMRI is a partnership between the University of Newcastle, Hunter New England Health and the community.

**Media contact: Lauren Eyles, HMRI Communications Manager, phone 0434 600 940 or 4921 4841.**

PAGE 1 OF 2

---

In partnership with our community

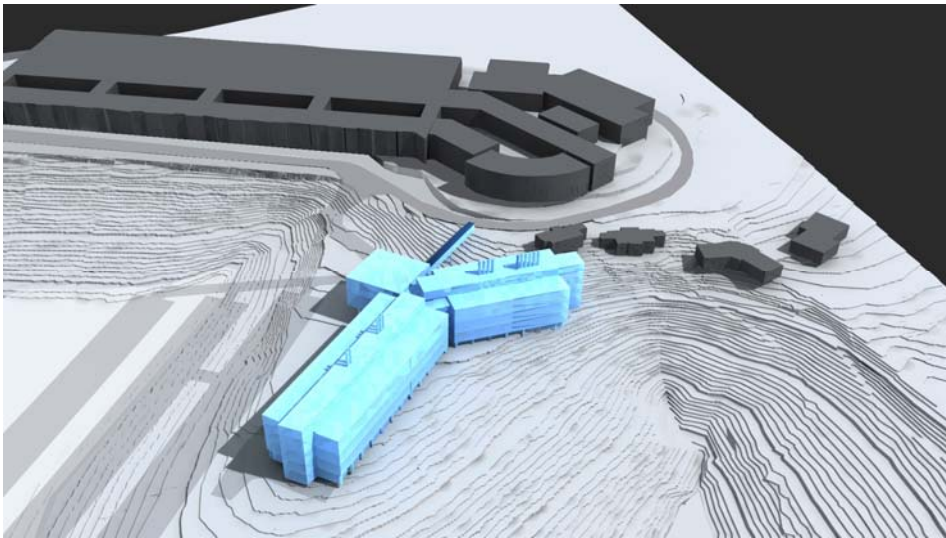


THE UNIVERSITY OF  
**NEWCASTLE**  
AUSTRALIA

HUNTER NEW ENGLAND  
**NSW HEALTH**



*An artist's impression of the HMRI Building from Kookaburra Crescent*



*A model showing the HMRI Building (blue) in relationship to John Hunter Hospital (grey).*



*An aerial view of the Rankin Park Campus showing the location of the HMRI Building and car parking.*

High resolution images of the Building are available on request.

Professor Maree Gleeson (HMRI Director) is available for interview on Friday 9<sup>th</sup> October between 10.30am and 2pm.

Media contact: Lauren Eyles, HMRI Communications Manager, phone 0434 600 940 or 4921 4841.

In partnership with our community

